

# WHAT IS THE IMPACT OF CHRONIC DISEASE ON MISSISSIPPI?



PARTNERSHIP TO FIGHT  
CHRONIC DISEASE  
A VISION FOR A HEALTHIER MISSISSIPPI

FightChronicDisease.org/Mississippi

Projected total cost of chronic disease 2016-2030 in Mississippi

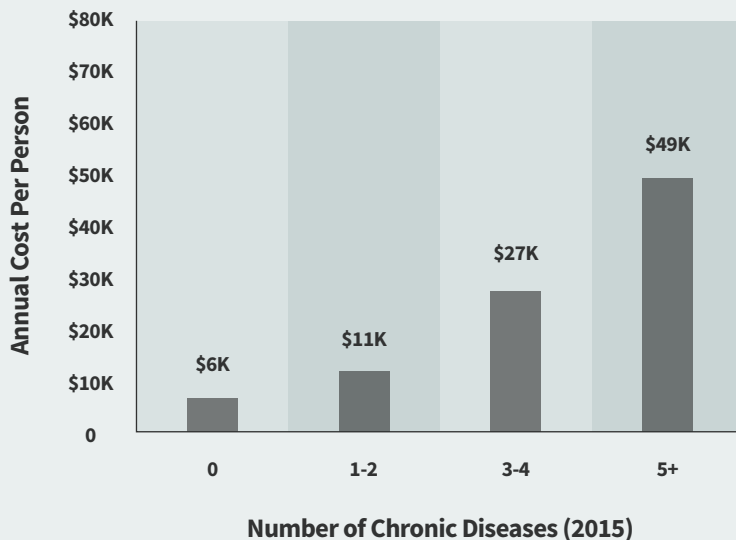
# \$405 BILLION

In 2015, **1.9 million** people in Mississippi had at least 1 chronic disease, **788 thousand** had 2 or more chronic diseases.

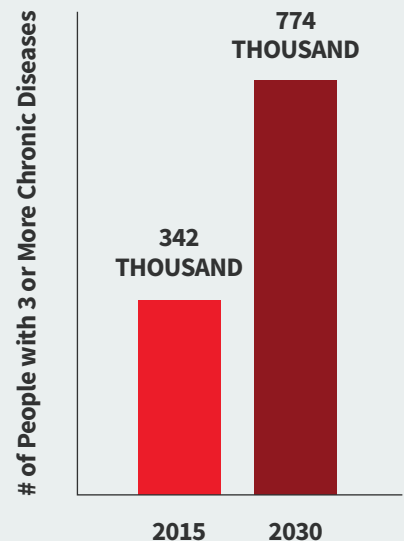
Chronic diseases could cost Mississippi **\$19.3 billion** in medical costs and an extra **\$7.7 billion** annually in lost employee productivity (average per year 2016-2030).

## 5% OF PEOPLE ACCOUNT FOR 50% OF HEALTH CARE SPENDING<sup>1</sup> IN MISSISSIPPI...

### HEALTH CARE COSTS ARE CONCENTRATED AMONG THOSE WITH MULTIPLE CHRONIC DISEASES



### NUMBER OF PEOPLE WITH 3+ CHRONIC DISEASES IS GROWING



<sup>1</sup> SB Cohen, "The Concentration and Persistence in the Level of Health Expenditures over Time: Estimates for the U.S. Population, 2012- 2013." Statistical Brief #481. AHRQ, Sept. 2015. [http://meps.ahrq.gov/mepsweb/data\\_files/publications/st481/stat481.pdf](http://meps.ahrq.gov/mepsweb/data_files/publications/st481/stat481.pdf)

**\$9,000 PER MISSISSIPPI RESIDENT**

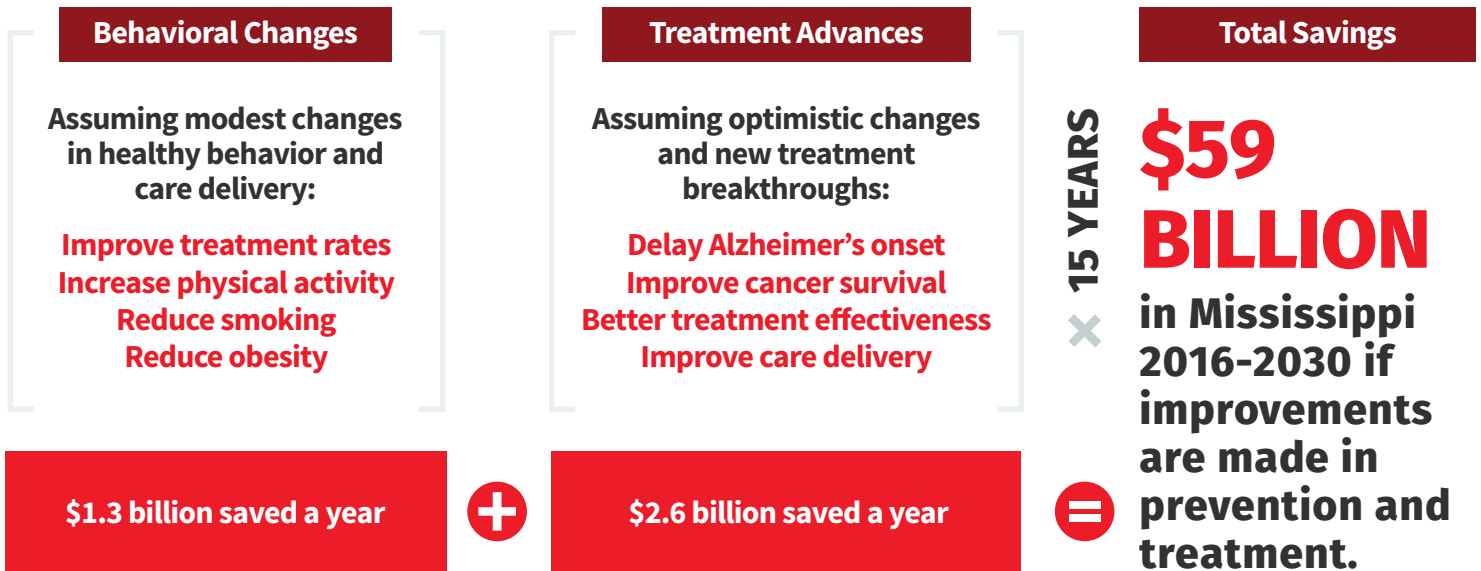
Projected **per person** medical and productivity cost of chronic disease in 2030 if current trends continue



**In Mississippi, 13,500 lives could be saved annually through better prevention and treatment of chronic disease.**

**TOGETHER WE CAN DO BETTER**

# Now is our chance to make a difference. Simple changes can prevent new cases of chronic disease and save money for Mississippi.



Medical breakthroughs can and will transform lives and save health care costs over the next 15 years in Mississippi and across the United States.

	Mississippi	U.S.
Prevented Cases of Chronic Disease	1.6 Million	169 Million
Total Cost Avoided	\$59 Billion	\$6 Trillion
Lives Saved	202 Thousand	16 Million

NOTE: The above outcomes are averages of annual outcomes across 2016-2030. All estimates are based on a microsimulation analysis conducted by IHS Life Sciences. For additional information on methodology, please visit [www.ihs.com/industry/life-sciences.html](http://www.ihs.com/industry/life-sciences.html).

**LET'S MAKE A DIFFERENCE, SPEAK OUT: [FIGHTCHRONICDISEASE.ORG/SPEAK-OUT](http://FIGHTCHRONICDISEASE.ORG/SPEAK-OUT)**



PARTNERSHIP TO FIGHT  
CHRONIC DISEASE  
A VISION FOR A HEALTHIER MISSISSIPPI

[FightChronicDisease.org/Mississippi](http://FightChronicDisease.org/Mississippi)